



UNITED NATIONS
9TH GLOBAL FORUM
ON GENDER STATISTICS
29-31 AUGUST 2023
JOHANNESBURG, SOUTH AFRICA

*9th United Nations Global Forum on Gender Statistics
Johannesburg, South Africa, 29-31 August 2023*

9GFGS – Session 8

Gender Statistics in Côte d'Ivoire

DORIA DEZA

Deputy Director at National Statistic Institut in Côte d'Ivoire

31 August 2023



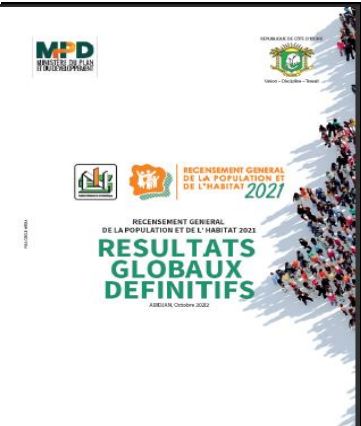
INTRODUCTION

The importance of having reliable gender statistics is an essential tool for national planning and gender equity.

Some progress is as follows:

1. Improvement of institutional framework
2. Existence of the national gender policy document
3. Integration of gender statistic in the master degree in agricultural statistics at ENSEA
4. Population census
5. Specific gender survey

I. What are the recent data sources?



❖ **Population Census 2021:** Population structure; - Percentage of households with female head; - Matrimonial situation; Migrations; - Child in labour; - Household and infrastructure geolocalisation



❖ **Demographic and healthy survey (DHS) 2021:** Maternal mortality; - Birth registration; - Domestic violences; - Age of first birth; - Contraceptions prevalence...



❖ **Survey on Social institutions and Gender index in 2021:** Female genital mutilation; - women's access to land; - discrimination in the family...

II. Restricted Technical Working Committee on gender statistics



The objectives of the Technical Working Committee are :

- Produce gender statistics
- Create a gender statistics database
- Disseminate the database
- Do gender studies

To achieve these objectives, the committee holds monthly meeting since 2022. Unfortunately, we did not have any financial mobilization.

Yet, INS as national statistical office has implemented some good practices in collaboration with different ministries.

III. Using administrative and census data

1. Study on primary school accessibility

✓ *geolocalisation education infrastructure*

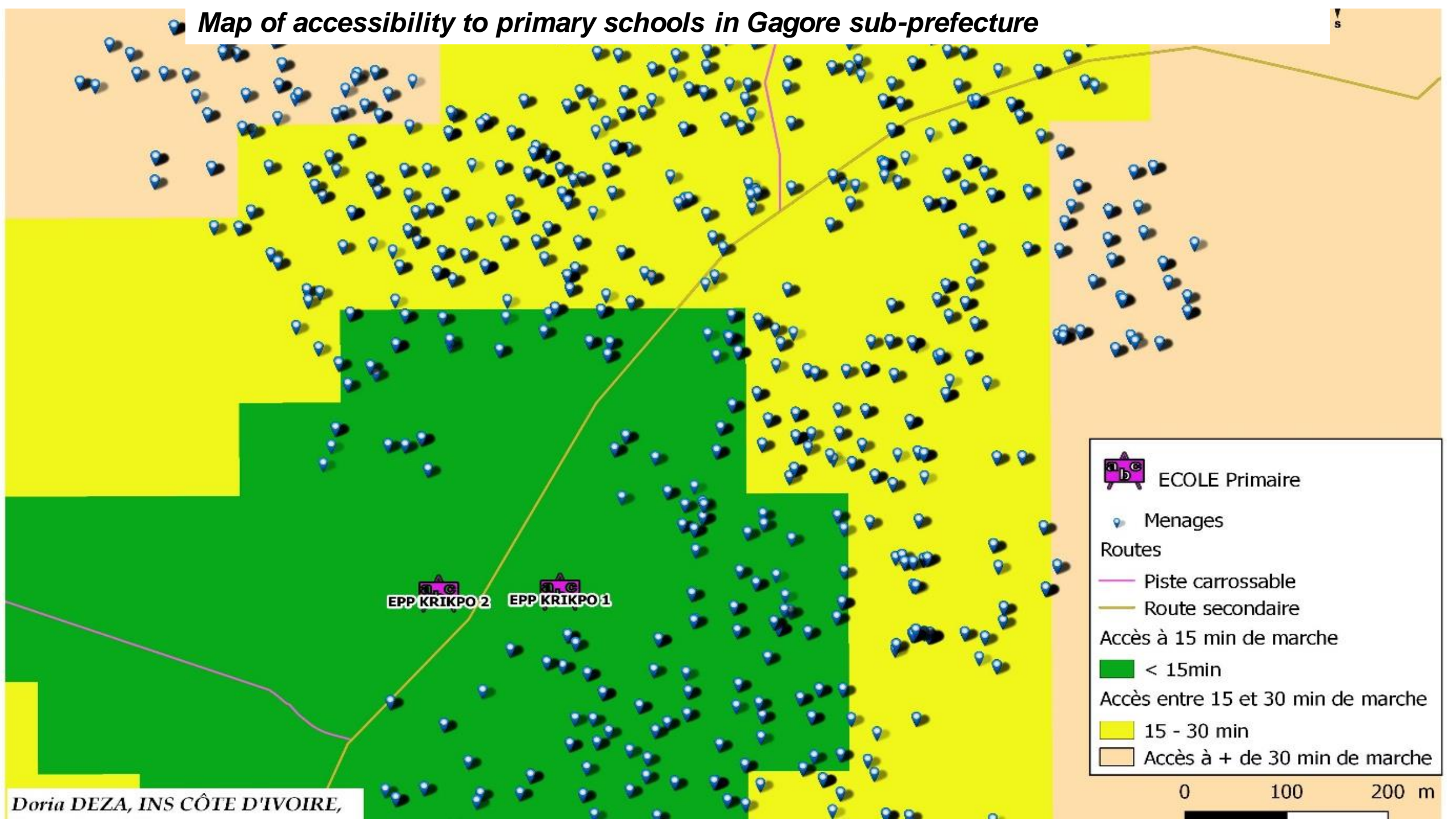
✓ *geolocalisation household*

✓ *Individual statistic*

➤ The distance between school and household impact the children scolarisation

Map of accessibility to primary schools in Gagore sub-prefecture

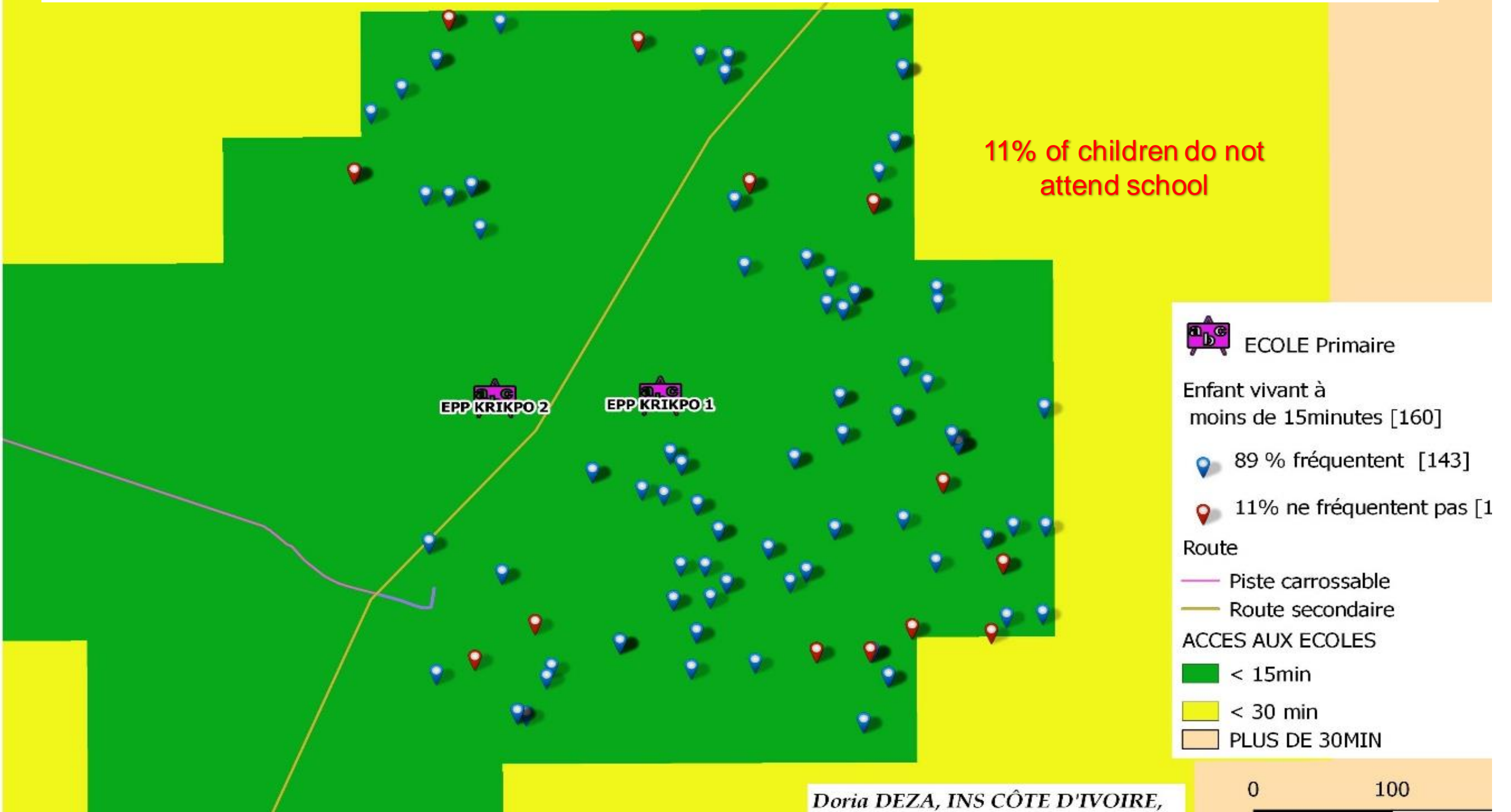
NS



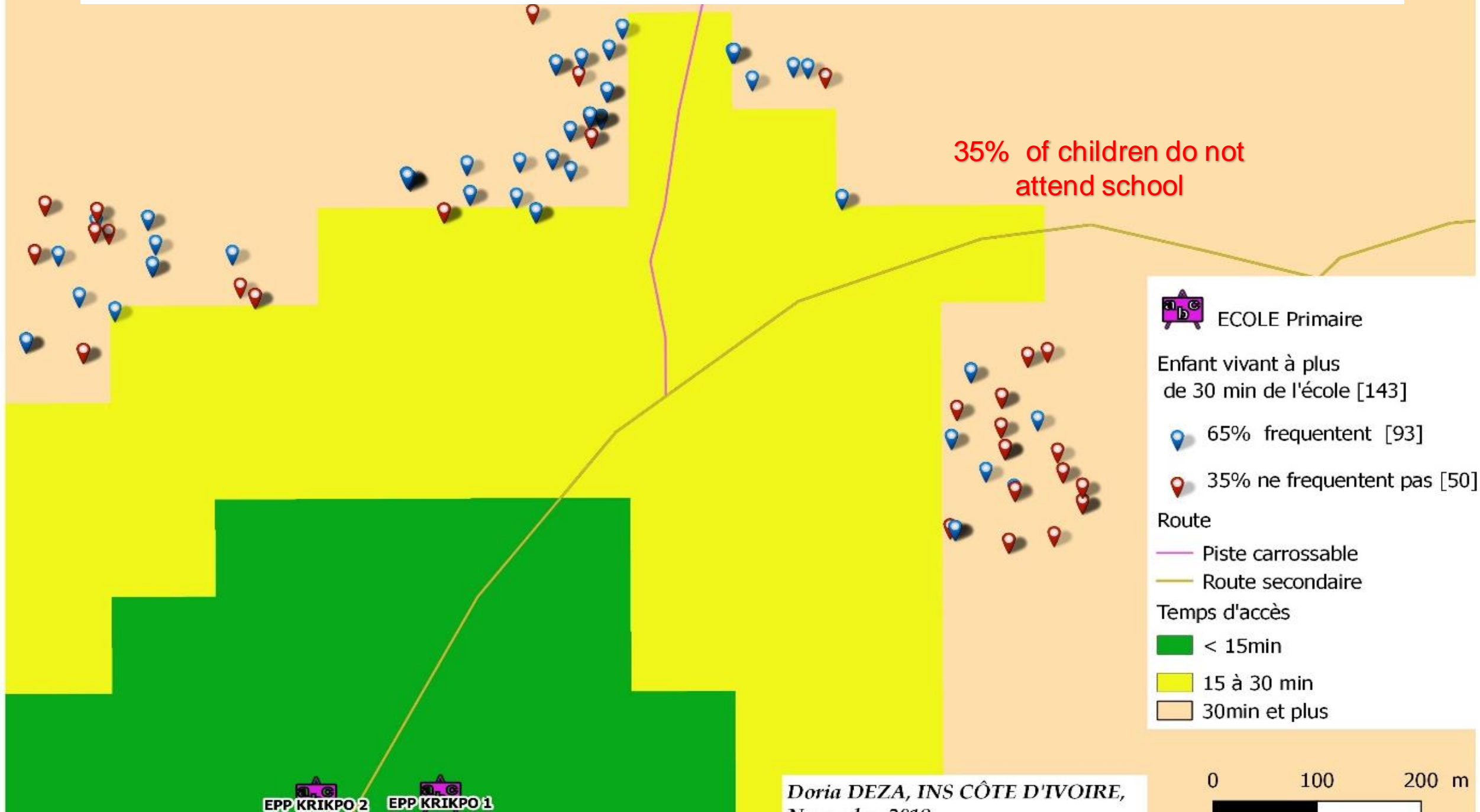
EPP KRIKPO 2

EPP KRIKPO 1

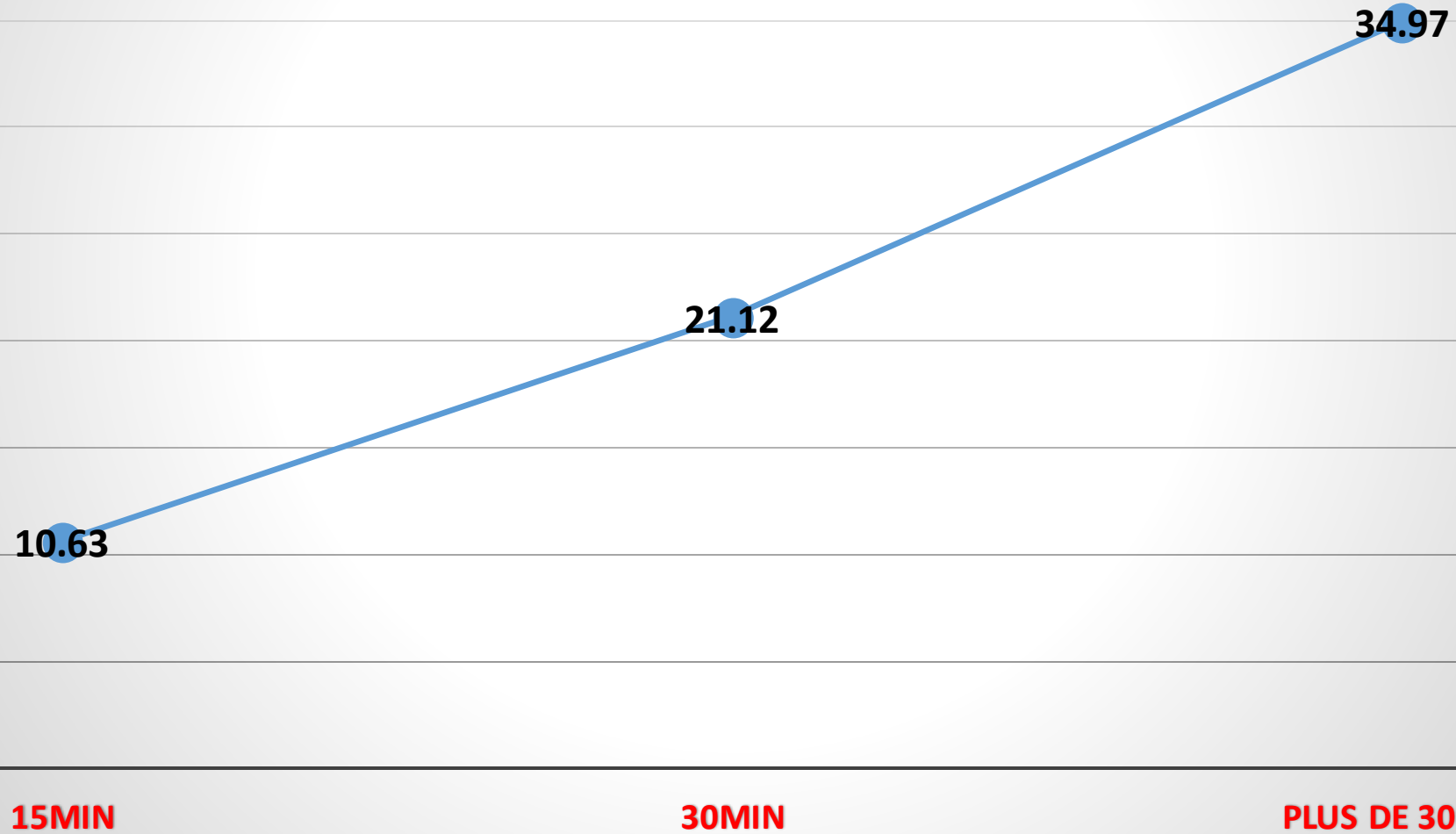
School attendance of children aged 6 to 11 located within 15 minutes of primary school



School attendance of children aged 6 to 11 located more than 30 minutes from primary school



Proportion of children aged 6 to 11 not attending school according to the distance between the household and the school



III. Using administrative and census data

1. Study on Emergency obstetric and neonatal care

✓ *geolocalisation health infrastructure*

✓ *geolocalisation road*

✓ *Population structure*

a. How distance between health infrastructure and household can increase maternal mortality ?

AGNÉBY-TIASSA

Légende

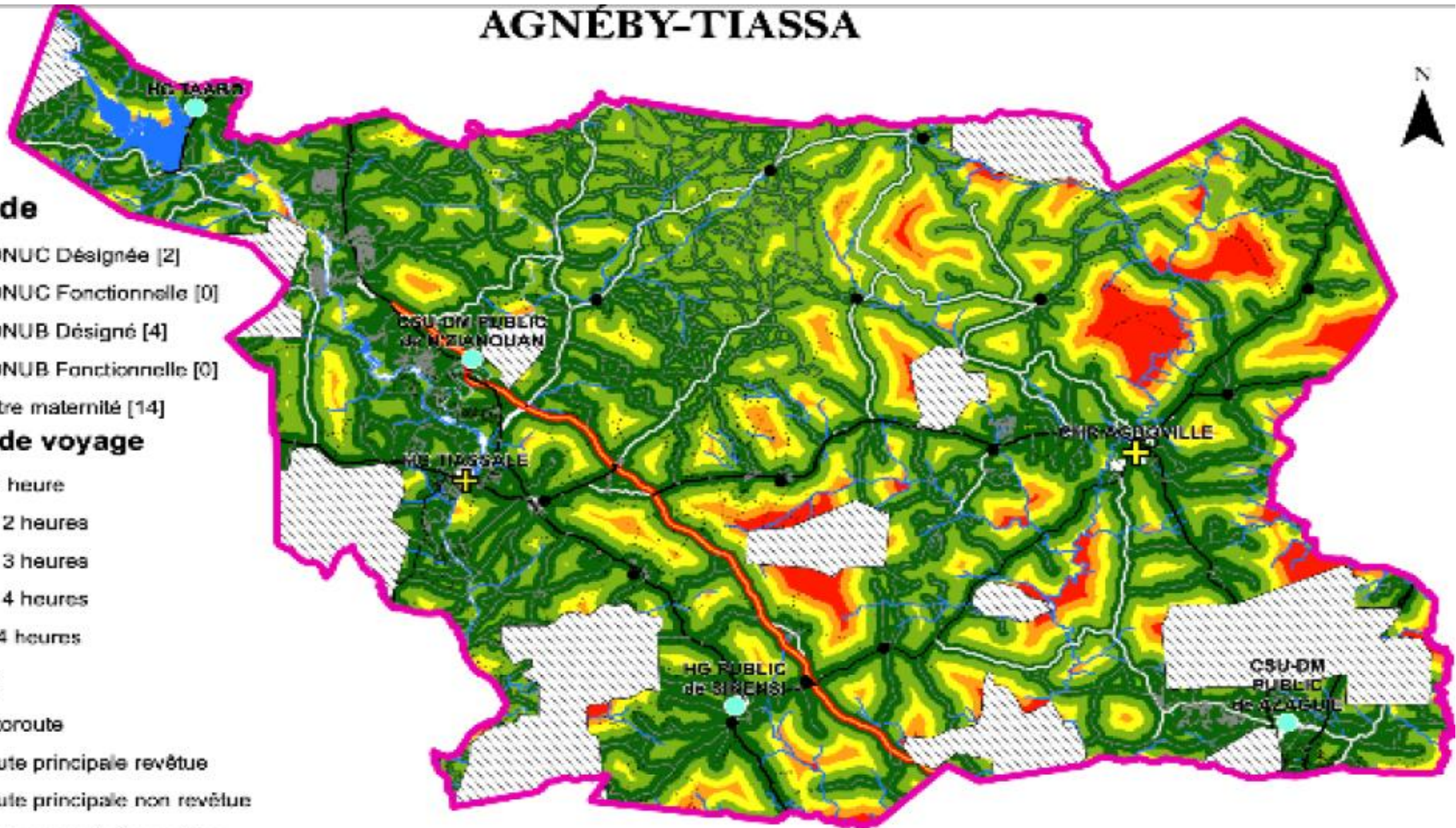
- ✚ SONUC Désignée [2]
- ⊕ SONUC Fonctionnelle [0]
- SONUB Désigné [4]
- ⊕ SONUB Fonctionnelle [0]
- Autre maternité [14]

Temps de voyage

- < 1 heure
- 1 - 2 heures
- 2 - 3 heures
- 3 - 4 heures
- > 4 heures

Routes

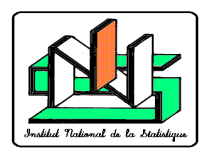
- Autoroute
- Route principale revêtue
- Route principale non revêtue
- Route secondaire revêtue
- Route secondaire non revêtue



With a superposition of geolocation household, we can identify the different household in vulnerability

IV. Recommendation

1. Mobilize financial to do a specific study such time using survey
2. Mobilize financial to publish all effort in gender statistic and to inform policies maker about all discriminations in Côte d'Ivoire.



Thank you !

